



# Sendai DRR Newsletter

Towards a Disaster-Resilient  
and Environmentally-Friendly City

August 2019 / Vol.7  
DRR Innovation Born in Sendai

▲ A support group visiting temporary housings

## Example of "Build Back Better" Sendai City's Unique Support Program for Disaster Victims

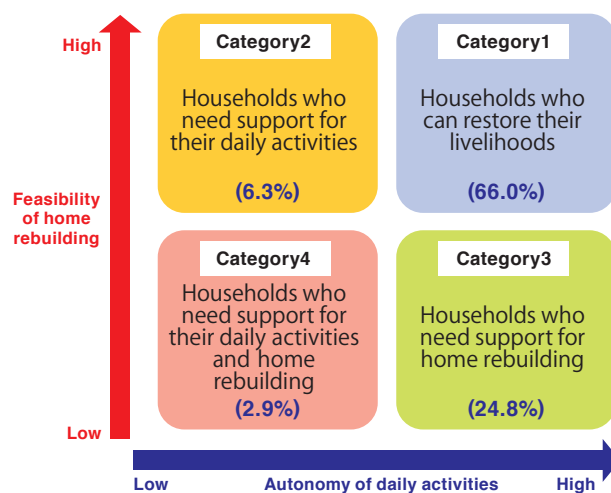
The Great East Japan Earthquake and tsunami in March 2011 deprived many people of their homes and forced them to move to temporary housing. The disaster-affected persons had to choose either dwelling in disaster reconstruction municipal housing prepared by the municipality or reconstructing their homes on their own while receiving support. To help them restore their livelihoods quickly, the City of Sendai implemented its unique support program.

Aiming to grasp the problems facing the disaster-affected persons, the City of Sendai carried out house-to-house visits to every household living in temporary housing in the city. The number of such households peaked at 12,000. However, through cooperation between the local government and private organizations including NPOs, they were able to visit every household. Based on the information gained through these visits, the disaster victims were classified into four categories, and necessary support was provided to each category. (See Figs. 1 and 2.)

With this program, the City of Sendai achieved almost zero households living in temporary housing by five and a half years after the Great East Japan Earthquake. By having a proper understanding of the situation of disaster victims and providing tailored support for each of them instead of supporting them in a uniform way, the city could help even socially vulnerable people, in restoring their livelihoods quickly.

The effectiveness of this program is highly evaluated, and therefore it has been adopted in many areas in Japan affected by earthquakes, heavy rains and other disasters in recent years. The Vice Mayor of the City of Sendai gave a presentation on this program at the World Reconstruction Conference held in Geneva in May 2019.

The City of Sendai will continue disseminating this good example of disaster recovery efforts which was carried out in cooperation with local residents, and contribute to the realization of "Build Back Better" in many countries and regions.



▲ Fig. 1: Four categories of disaster victims(As of Mar 1,2014)

Category	Name	Support Details
Category1	Households who can restore their livelihoods	Providing necessary information about livelihood restoration
Category2	Households who need support for their daily activities	Continuing door-to-door visits, providing healthcare guidance and introducing other administrative services
Category3	Households who need support for home rebuilding	Providing consultations about home rebuilding and employment
Category4	Households who need support for their daily activities and home rebuilding	Creating detailed individual support plans

▲ Fig. 2: Support for each category

## Sendai City Welcomes Observation Tours from Abroad

The City of Sendai welcomes observation and training tours to communicate its experience and lessons from the Great East Japan Earthquake, disaster recovery efforts and DRR activities, thereby contributing to DRR in various countries and regions.

We offers classroom lectures using slides and videos and observation-cum-study tours to ruins of the Great East Japan Earthquake and tsunami evacuation facilities. Professionals from the city's respective departments serve as lecturers according to the purpose of the training.

In FY 2018, 781 people in 54 groups visited Sendai City from abroad. The number of visiting people has been increasing since statistics started to be kept in 2016. The visitors include a wide range of people from students and researchers to government officials.

If you hope to visit Sendai City, feel free to make contact through email.



▲ Observing Ruins of the Great East Japan Earthquake : Arahama Elementary School



▲ Observing the coast



# Utilizing Ideas from University Students for DRR

## Introducing "Honey Room" to the World, a Nursing Room Made of Cardboard for Use in Evacuation Centers



### Department of Architecture, Tohoku Institute of Technology

From Left to Right  
Professor Satoshi Ishii  
Students: Haruna Asano, Sachie Takaizumi, Fuyu Suzuki



We are students at Tohoku Institute of Technology, studying architecture. We participated in a project which proposed the idea of cardboard products which can be used in evacuation centers during the 2019 Sendai Symposium for Disaster Risk Reduction and the Future held this March.

We experienced the Great East Japan Earthquake when we were junior high school students, and some of us lived for some time in an evacuation center. Though many people had to live together in the same space, there was nothing to block the view of others. Therefore, mothers had to breast-feed their babies while worrying about others watching. With this in mind, we developed a nursing room made of cardboard named "Honey Room", where mothers can breast-feed with peace of mind.

During the designing process, we changed its shape from a circle to a square, and later to a hexagon, to ensure an area-efficient space which is free from stress. In addition, its entrance has no doors but is covered with three walls so that mothers can enter the room with their baby in their arms.

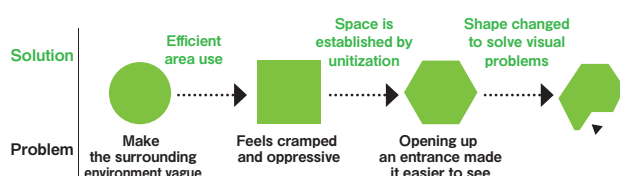
A local company which helped us create a full-scale model of Honey Room with reinforced cardboard, and gave advice on its size, specifications of its blind-style window coverings on the ceiling

and others. Thanks to this advice, it became more practical.

At the forum, visitors who actually experienced the full-scale model of Honey Room gave us favorable responses, such as "I can breast-feed my child in a relaxed manner without concern about others' eyes" and "I wish there had been this kind of space in evacuation centers at the time of the Great East Japan Earthquake."

After exhibiting Honey Room at the forum, we received orders for the product from NPOs and government organizations. Now we are applying for design rights for its commercialization. We hope our idea will be widely utilized as a new DRR product developed in Sendai City.

#### ● Process of Shape Considerations



**Honey Room will be displayed at the World Bosai Forum held in November 2019!**



▲ Casebook (Japanese version)

## Sendai City's Efforts Were Approved as Sendai Framework Voluntary Commitment

Sendai Framework Voluntary Commitment (SFVC) is a project led by the United Nations Office for Disaster Risk Reduction (UNDRR) aiming to promote efforts of various organizations based on Sendai Framework and share them with the world.

The City of Sendai applied for SFVC with its two programs: the Sendai Framework for DRR Citizen Seminar co-organized with IRIDeS, Tohoku University; and the "Decision-making and Taking Action" program to develop female human resources who can exercise leadership in local communities. Both programs were approved as SFVC in March 2019.

At the World Bosai Forum to be held in Sendai in November 2019, the City of Sendai will present an English version of a casebook made by participants of the Sendai Framework for DRR Citizen Seminar as their study result, titled "Our connections for the future BOSAI 2019". Using this casebook and other materials, and in cooperation with its local residents, the city will communicate their grassroots efforts to the world.



▲ Presenting the casebook of the Sendai Framework for DRR Citizen Seminar

### Disaster-Resilient and Environmentally-Friendly City Promotion Office

3-7-1 Kokubuncho, Aoba-ku, Sendai 980-8671, Japan

Tel: +81(0)22-214-8098 E-mail: mac001605@city.sendai.jp Website: <https://sendai-resilience.jp/en/>

